



NEW SCHOOL BUILDING

INTRODUCTION OF OUR NEW

- KINDER GARDEN
- ADMIN BUILDING
- PERFORMING ARTS SPACE AND STUDIOS
- ROOF GARDEN

16 MARCH 2022

Introduction

Project Team.

Totty Aris, Head of school
Michael Anastasi, Project Architect
Lisa Carson, Project Manager
Joe Galea, Project Architect

To present the Final design & plans for the expansion of VIS Campus.

The new **720 Sqm** one storey building has been granted planning permission and we are currently working to finalise the costs and timeline for this project

We aim to commence ground works during the summer break 2022 and complete all by end of Summer 2024

EXPECTED PROJECT DURATION 24 - 28 mths FROM COMMENCEMENT



Our Responsibilities

Greatly Improve facilities and student experience whilst best utilizing the limited space

Honour our commitment to become more sustainable and environmentally friendly

To design a Modern, innovative building that sits harmoniously within its protected heritage site.

Create a building which fully reflects the schools image, curriculum and commitment to the future.

The school must operate smoothly throughout the construction process



Verdala
INTERNATIONAL SCHOOL



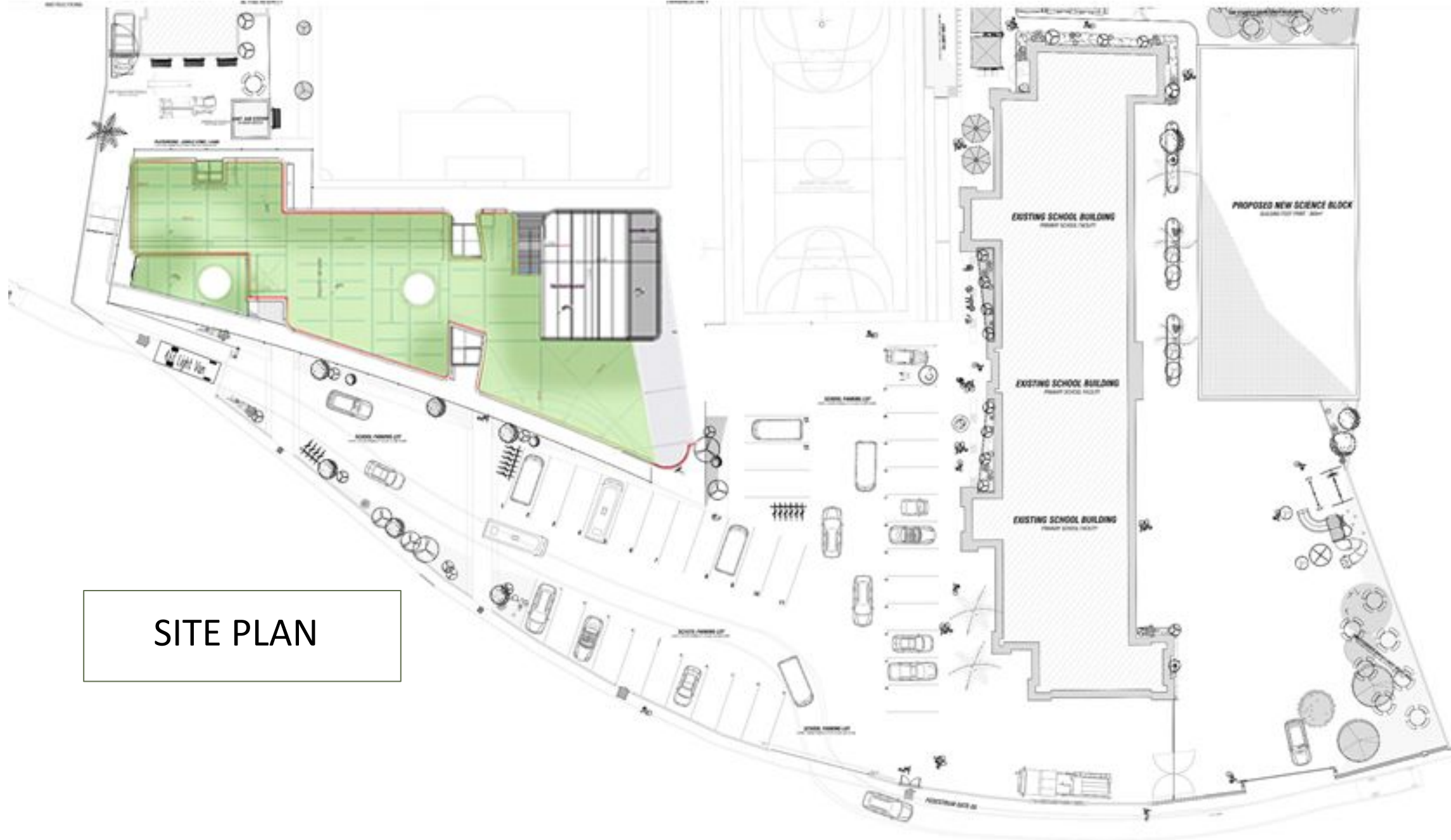
Verdala
INTERNATIONAL SCHOOL

New Facilities

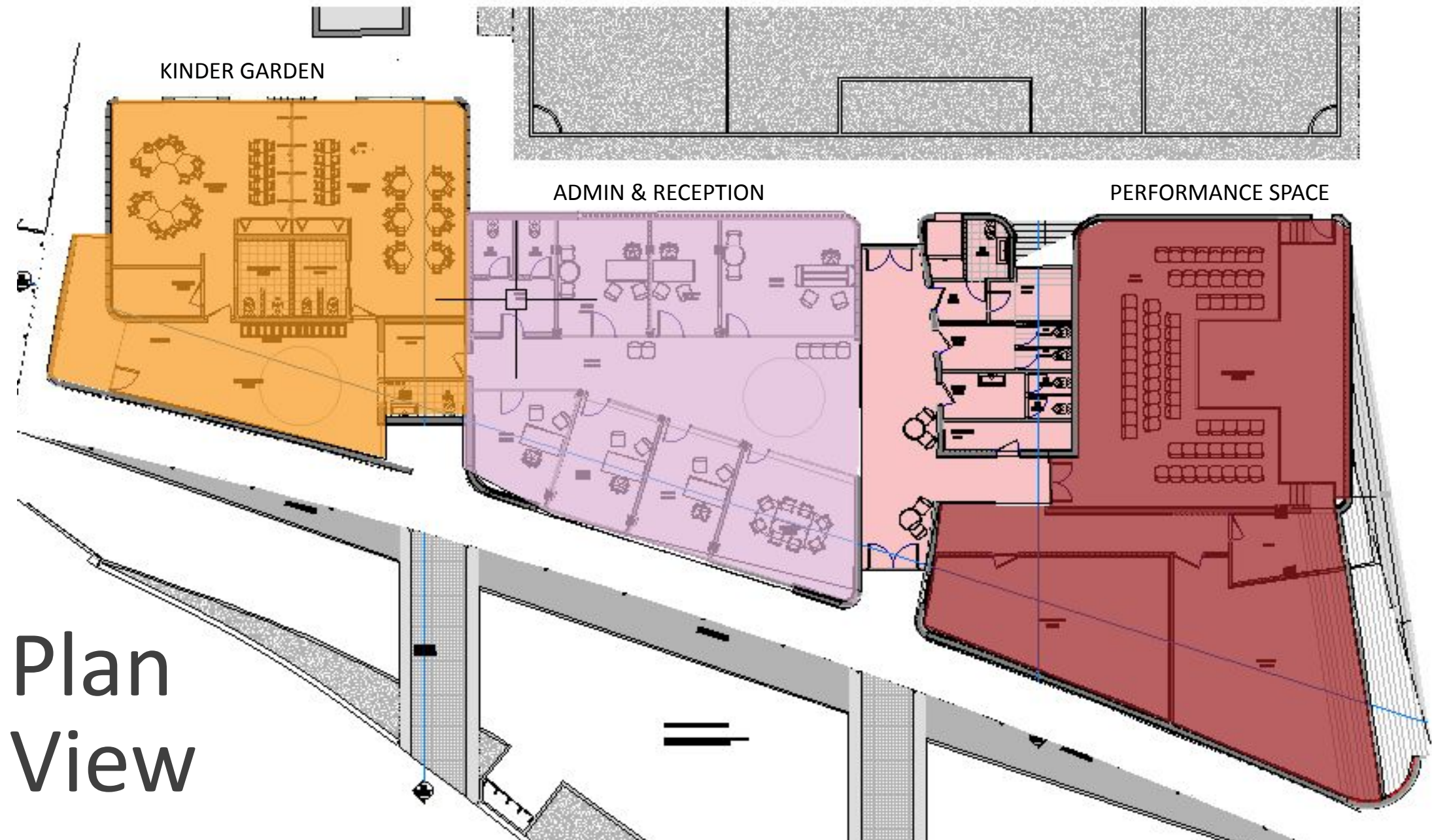
The new block will contain the following;

- 2 Kindergarden classrooms with an indoor play area and associated facilities 140 sqm
- An independent Performing arts multi functioning space 115 sqm
- 2 music & drama studios 105 sqm
- New Reception and administration area with 5 offices and meeting space 175 sqm
- Central foyer with facilities, storage and independent server room 75 sqm
- Roof garden & multipurpose teaching space - lift access 400 sqm

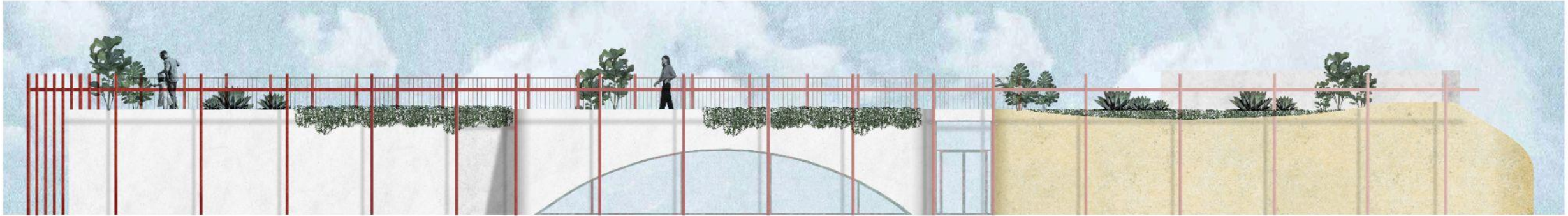
SITE PLAN



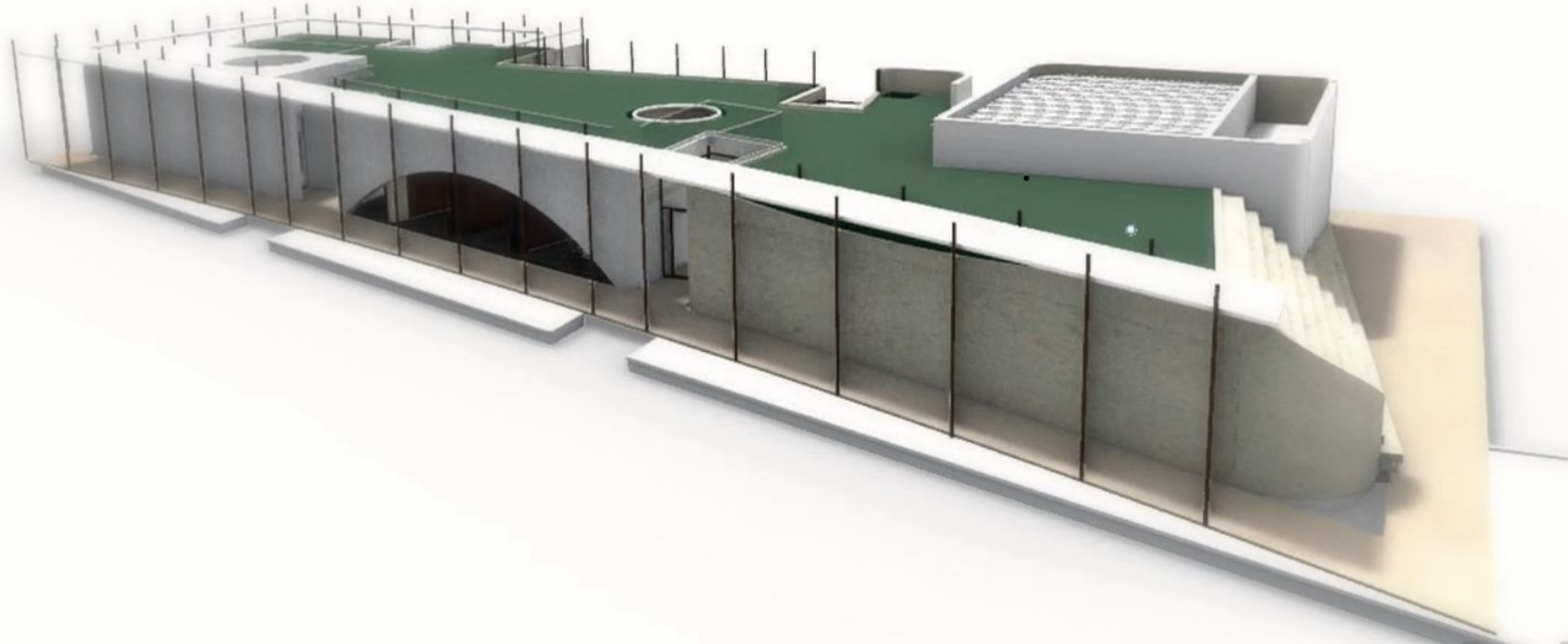
Verdala
INTERNATIONAL SCHOOL



Plan
View



FRONT ELEVATION



Verdala
INTERNATIONAL SCHOOL



VERDALA RED STEEL CANOPY
AWNING FOR SHADING
AWNING CONSTRUCTED FROM PV PANELS ON TOP
CONTEMPORARY STRUCTURE IN COLOUR SPECTRUM CHANGING TONES

soft taupe/white
plaster finish

exterior render

KINDERGARDEN ENTRANCE

LEADS TO NEW LOBBY & 2 CLASSROOMS
CLOSED WALLS IN

ARC WINDOW FEATURE

EXTERIOR WALL WITH
SOFT ARC IN FRONT OF
OFFICE APERTURES

MAIN ADMIN ENTRANCE

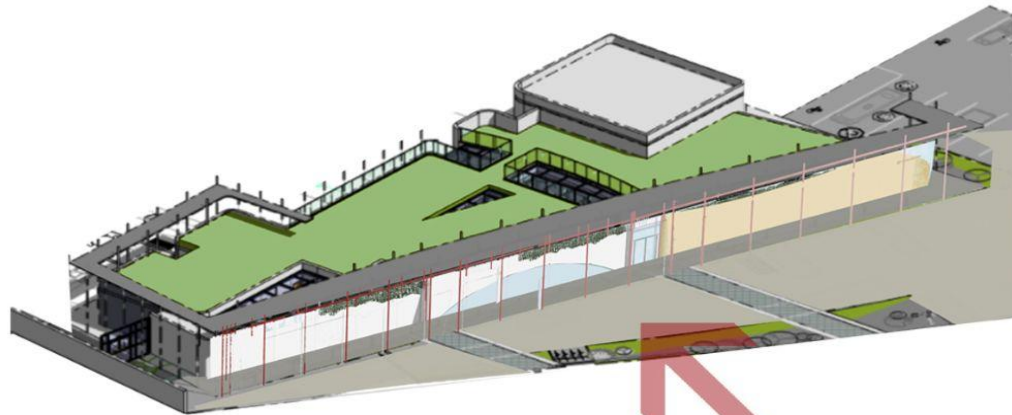
TO MAIN FOYER, OFFICES &
PERFORMING ARTS CLASSROOMS
& STUDIO

Local Limestone
cladding to exterior walls

FRONT FACADE

LIMESTONE CLADDING FINISH

EXTERIOR WALL FINISH FOR THE FRONT
FACADE OF THE PERFORMING ARTS STUDIO
& CLASS ROOMS

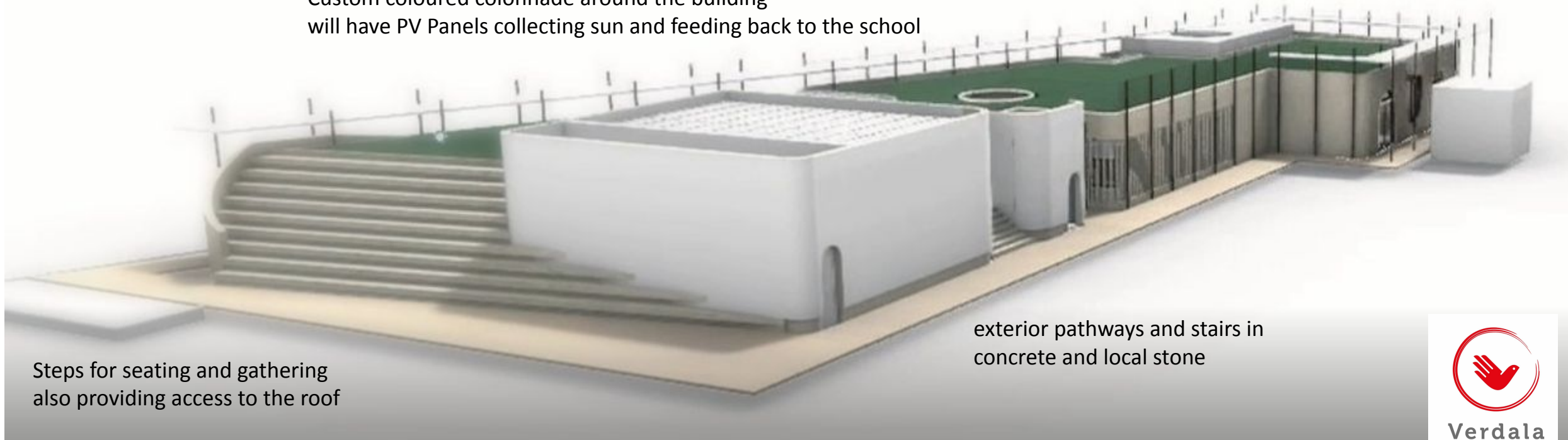


Verdala
INTERNATIONAL SCHOOL



EAST ELEVATION

Custom coloured colonnade around the building
will have PV Panels collecting sun and feeding back to the school



Steps for seating and gathering
also providing access to the roof

exterior pathways and stairs in
concrete and local stone



Verdala
INTERNATIONAL SCHOOL



BACK ELEVATION

accessible area for services
above the performance space

Mix of artificial turf and local plant wild garden
on the roof - acts as great insulation

kindergarten opens on to play area
to the rear of the building



Stairwell and hydraulic
lift for access to roof

rear office with
Louvred shutters for shade



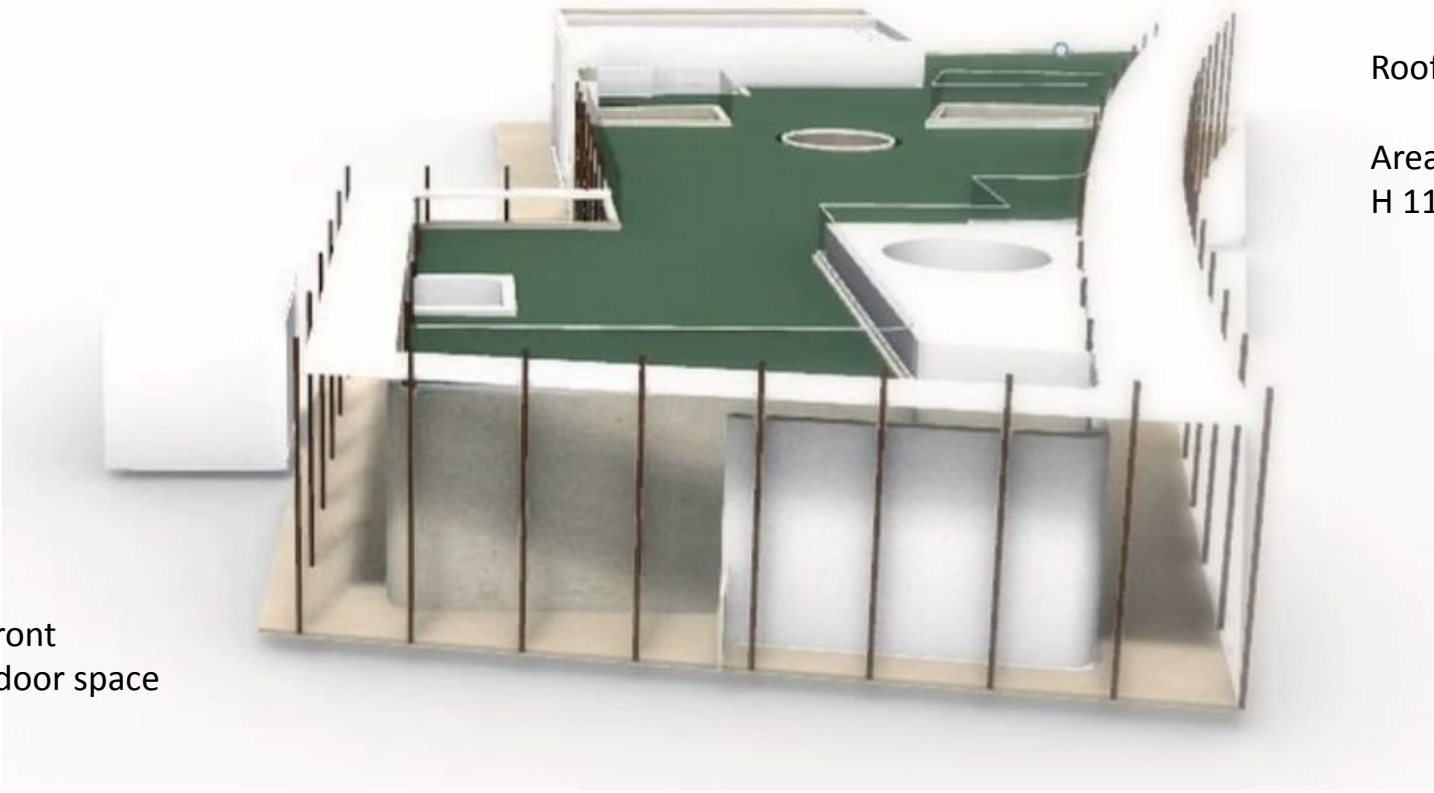
Verdala
INTERNATIONAL SCHOOL



WEST ELEVATION

Pathway from the Kinder garden to the safe play area to the back

High wall is secure and private at the front opening into large classrooms and outdoor space



Roof garden with skylights

Area has perimeter glass railing
H 1100mm FFL



Verdala
INTERNATIONAL SCHOOL

KINDER GARDEN



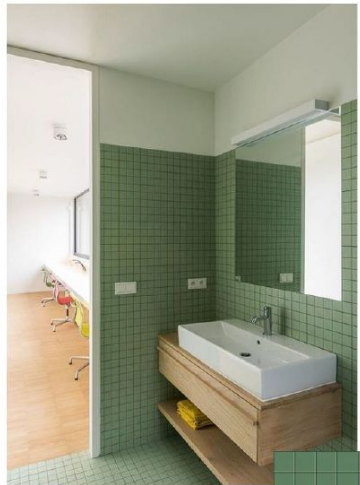
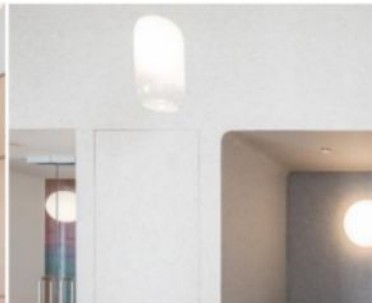
calming & gentle



warm & comforting



grounding



bathrooms



Verdala
INTERNATIONAL SCHOOL



grounding



creativity & concentration



alertness



positivity



concrete finish



natural cherry

offices



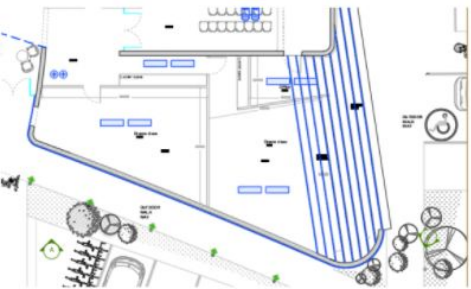
ADMINISTRATION
& RECEPTION



Verdala
INTERNATIONAL SCHOOL



drama class



grounding



creativity & concentration



warm & comforting



alertness



natural cherry

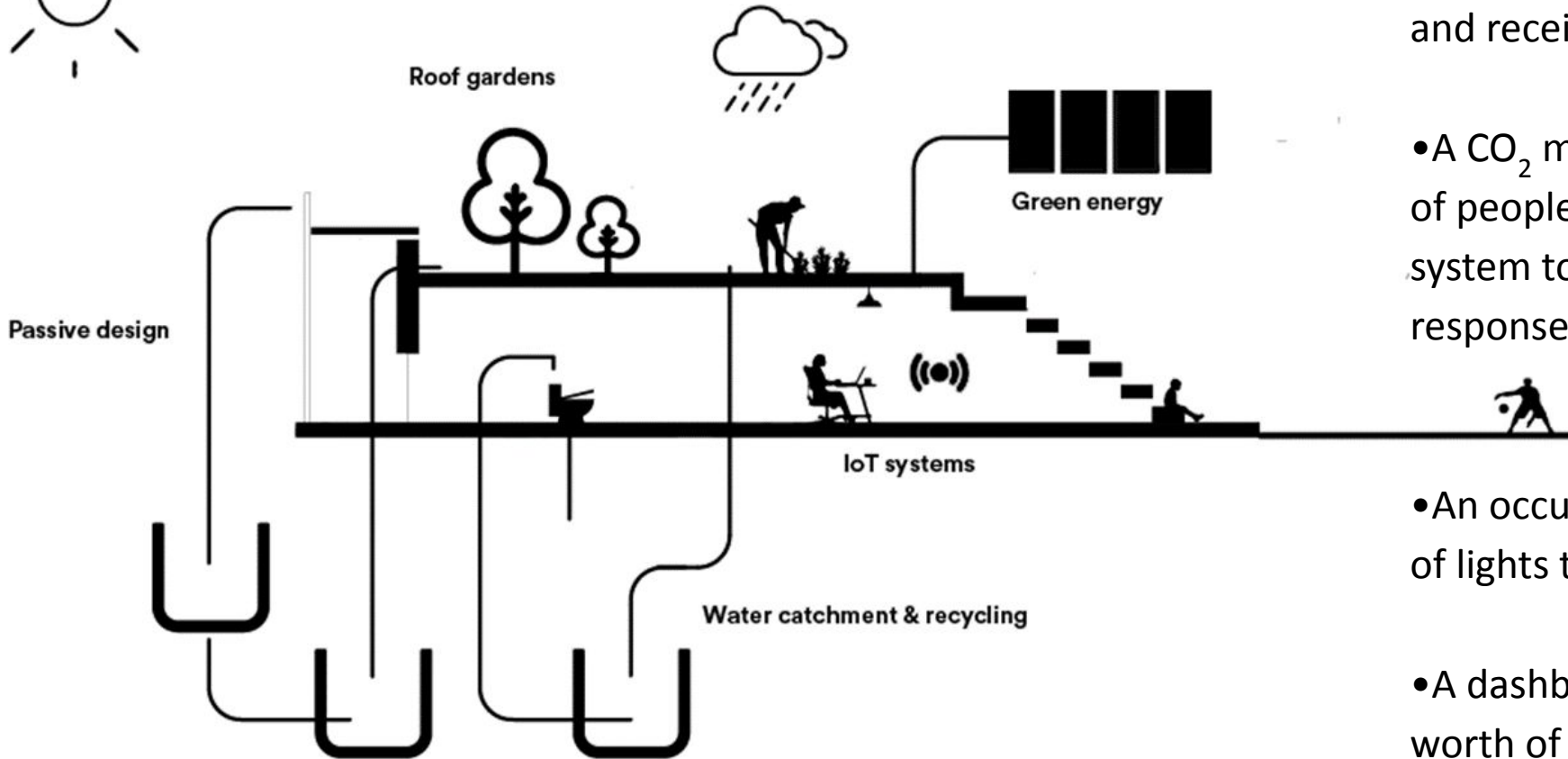


drapery fabric



PERFORMANCE SPACE & STUDIOS

ENVIRONMENTALLY AWARE SUSTAINABLE DESIGN



What is IoT?

In the simplest terms, the Internet of Things is a network of sensors, meters, appliances and other devices that are capable of sending and receiving data. In other words:

- A CO₂ meter that can estimate the number of people in a room and tell your HVAC system to increase the ventilation rate in response
- An occupancy sensor that can order a bank of lights to turn on when it senses a presence
- A dashboard that can analyze a building's worth of sensor data and turn it into actionable insights



WORKING GARDEN



GREEN ROOF



SOLAR ENERGY

1. **Energy:** Includes popular applications like wireless energy consumption monitoring.
2. **Equipment:** Those that optimize lighting and HVAC use.
3. **Environmental quality:** Devices might measure particulate matter or CO₂.
4. **People or spaces:** Devices that can measure occupancy, space utilization or how many people have passed through a certain entrance.

ESTABLISH AND BUILD A BRICK WALL AROUND THE BUILDING SITE.

WE PLAN TO CREATE A FULLY COVERED WALKWAY WITH BRICKS AND A CONCRETE SLAB ROOF

THE WALKWAY WILL BE H2.4 m X W1.5m & HAVE A H1.1m BARRIER WALL TO THE OUTSIDE OF THE WALKWAY

THE WALLS WILL BE FINISHED, PAINTED AND HAVE DISPLAYED GRAPHICS.

THIS WALKWAY WILL BE IN PLACE FOR THE DURATION OF THE PROJECT

THE BUILDING SITE WILL NOT BE ACCESSIBLE FROM THE SCHOOL. IT WILL HAVE A SEPERATE ENTRANCE NEAR THE COUNCIL BUILDING

ESTABLISH AND BUILD A BRICK WALL AROUND THE BUILDING SITE.

WE PLAN TO CREATE A FULLY COVERED WALKWAY WITH BRICKS AND A CONCRETE SLAB ROOF

THE WALKWAY WILL BE H2.4 m X W1.5m & HAVE A H1.1m BARRIER WALL TO THE OUTSIDE OF THE WALKWAY

THE WALLS WILL BE FINISHED, PAINTED AND HAVE DISPLAYED GRAPHICS.

THIS WALKWAY WILL BE IN PLACE FOR THE DURATION OF THE PROJECT

THE BUILDING SITE WILL NOT BE ACCESSIBLE FROM THE SCHOOL. IT WILL HAVE A SEPERATE ENTRANCE NEAR THE COUNCIL BUILDING

ESTABLISH AND BUILD A BRICK WALL AROUND THE BUILDING SITE.

WE PLAN TO CREATE A FULLY COVERED WALKWAY WITH BRICKS AND A CONCRETE SLAB ROOF

THE WALKWAY WILL BE H2.4 m X W1.5m & HAVE A H1.1m BARRIER WALL TO THE OUTSIDE OF THE WALKWAY

THE WALLS WILL BE FINISHED, PAINTED AND HAVE DISPLAYED GRAPHICS.

THIS WALKWAY WILL BE IN PLACE FOR THE DURATION OF THE PROJECT

THE BUILDING SITE WILL NOT BE ACCESSIBLE FROM THE SCHOOL. IT WILL HAVE A SEPERATE ENTRANCE NEAR THE COUNCIL BUILDING

ESTABLISH AND BUILD A BRICK WALL AROUND THE BUILDING SITE.

WE PLAN TO CREATE A FULLY COVERED WALKWAY WITH BRICKS AND A CONCRETE SLAB ROOF

THE WALKWAY WILL BE H2.4 m X W1.5m & HAVE A H1.1m BARRIER WALL TO THE OUTSIDE OF THE WALKWAY

THE WALLS WILL BE FINISHED, PAINTED AND HAVE DISPLAYED GRAPHICS.

THIS WALKWAY WILL BE IN PLACE FOR THE DURATION OF THE PROJECT

THE BUILDING SITE WILL NOT BE ACCESSIBLE FROM THE SCHOOL. IT WILL HAVE A SEPERATE ENTRANCE NEAR THE COUNCIL BUILDING

ESTABLISH AND BUILD A BRICK WALL AROUND THE BUILDING SITE.

WE PLAN TO CREATE A FULLY COVERED WALKWAY WITH BRICKS AND A CONCRETE SLAB ROOF

THE WALKWAY WILL BE H2.4 m X W1.5m & HAVE A H1.1m BARRIER WALL TO THE OUTSIDE OF THE WALKWAY

THE WALLS WILL BE FINISHED, PAINTED AND HAVE DISPLAYED GRAPHICS.

THIS WALKWAY WILL BE IN PLACE FOR THE DURATION OF THE PROJECT

THE BUILDING SITE WILL NOT BE ACCESSIBLE FROM THE SCHOOL. IT WILL HAVE A SEPERATE ENTRANCE NEAR THE COUNCIL BUILDING

ESTABLISH AND BUILD A BRICK WALL AROUND THE BUILDING SITE.

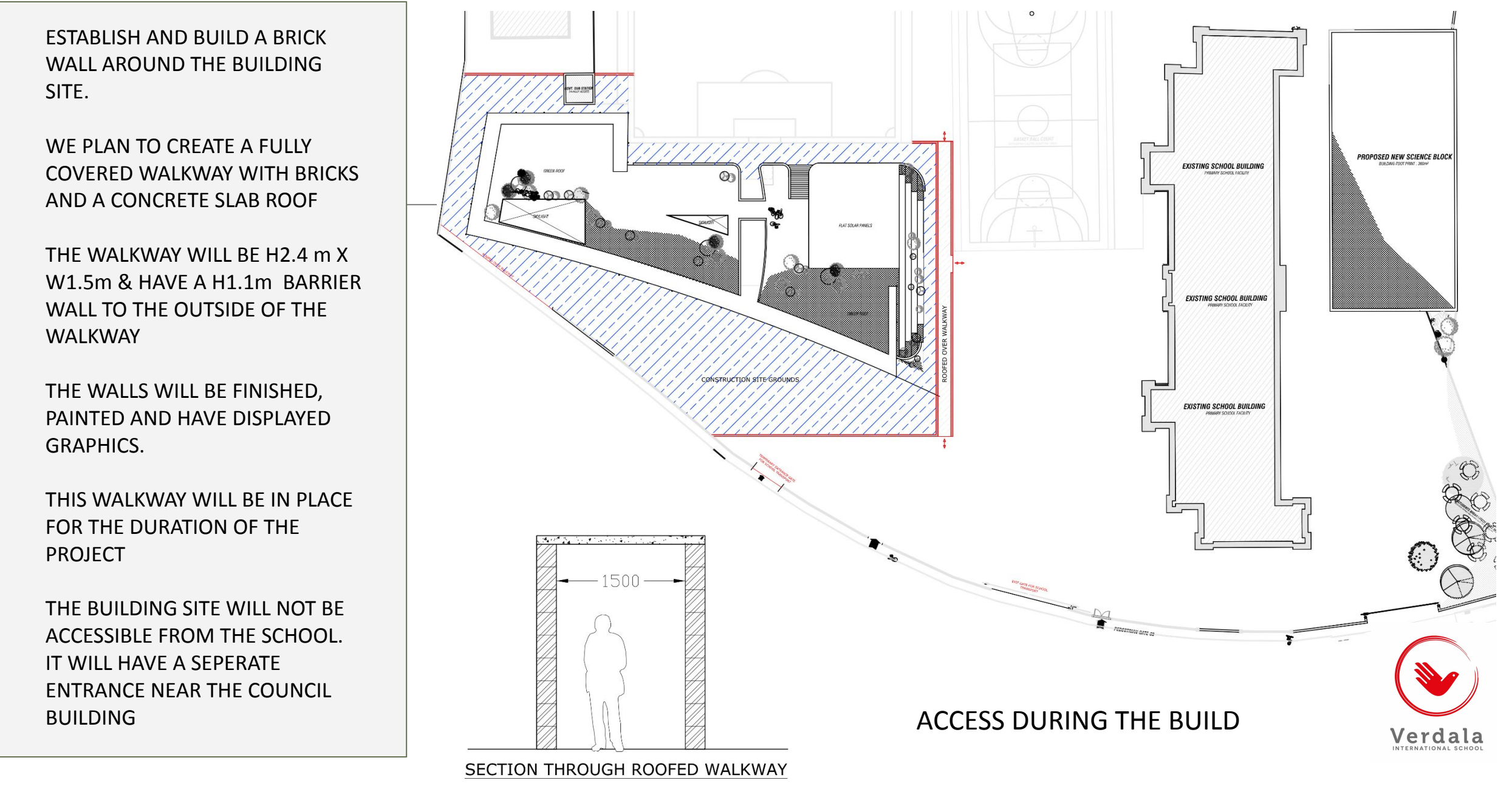
WE PLAN TO CREATE A FULLY COVERED WALKWAY WITH BRICKS AND A CONCRETE SLAB ROOF

THE WALKWAY WILL BE H2.4 m X W1.5m & HAVE A H1.1m BARRIER WALL TO THE OUTSIDE OF THE WALKWAY

THE WALLS WILL BE FINISHED, PAINTED AND HAVE DISPLAYED GRAPHICS.

THIS WALKWAY WILL BE IN PLACE FOR THE DURATION OF THE PROJECT

THE BUILDING SITE WILL NOT BE ACCESSIBLE FROM THE SCHOOL. IT WILL HAVE A SEPERATE ENTRANCE NEAR THE COUNCIL BUILDING



Estimated Timeline

24-28 mths

