



**Verdala**  
INTERNATIONAL SCHOOL

# NEW SCHOOL BUILDING

## PROGRESS UPDATE III

- KINDERGARTEN
- ADMIN BUILDING
- PERFORMING ARTS SPACE  
AND STUDIOS
- ROOF GARDEN

**18 OCTOBER 2023**

# Project Teams

# 2023-2024

## Verdala Team

Totty Aris	Head of school
Nick Borg	Facilities Chair
Michael Anastasi	Project Architect / Structural Engineer
Joe Galea	Project Architect
Lisa Carson	Project Manager

## M&E Team

Ing Joseph Vasallo	M&E Engineer	<i>Megaline</i>
Daniel Abela	Project Electrician	<i>Megaline</i>
Mark Fenech	Automation, Network installation & Design	<i>Future Habitats</i>

## Fitout Contractor

Omar Caruana & Sena Deniz Halicioglu

*Attard Bros*



# Agenda

---

- + To present updates and amendments to the design and plans 2023- 24
- + Discuss new timeline for this project, including risks and delays
- + Project costs

# Our Responsibilities

---

Greatly Improve facilities and student experience whilst best utilizing the limited space

Honour our commitment to become more sustainable and environmentally friendly

To design a Modern, innovative building that sits harmoniously within its protected heritage site.

Create a building which fully reflects the schools image, curriculum and commitment to the future.

The school must operate smoothly throughout the construction process



Verdala  
INTERNATIONAL SCHOOL



**Verdala**  
INTERNATIONAL SCHOOL

# New Facilities

---

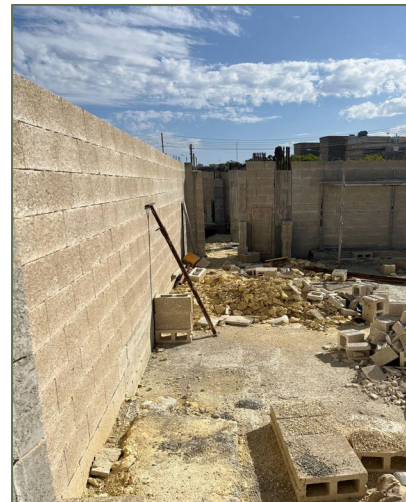
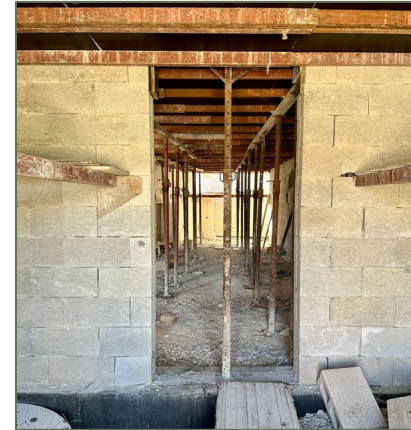
**The new block will contain the following;**

- 2 Kindergarten classrooms with an indoor play area and associated facilities **140 sqm**
- An independent Performing arts multi functioning space **115 sqm**
- 2 music & drama studios **105 sqm**
- New Reception and administration area with 5 offices and meeting space **175 sqm**
- Central foyer with facilities, storage and independent server room **75 sqm**
- Roof garden & multipurpose teaching space - lift access **400 sqm**

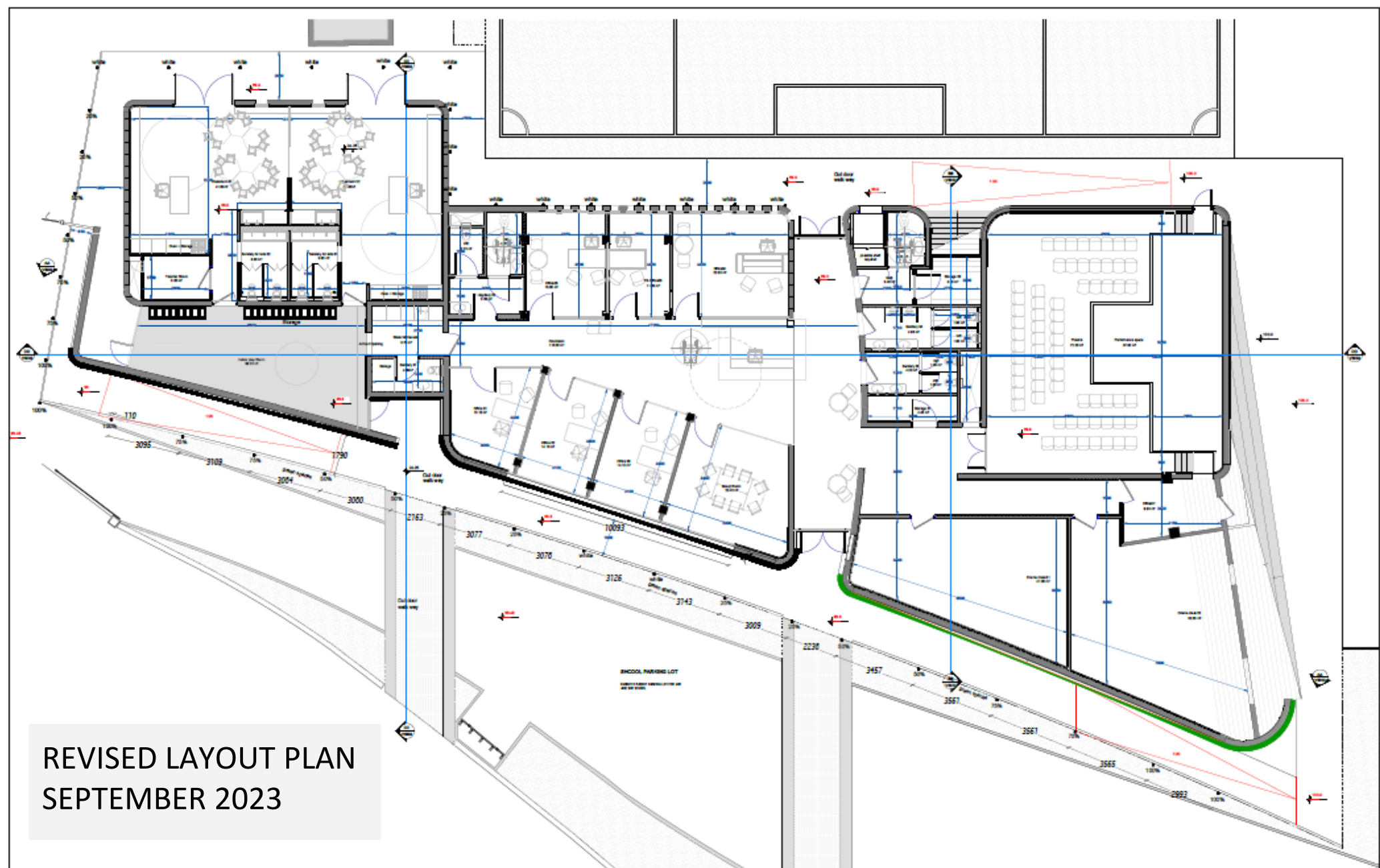


# SITE PHOTOS

October 2023







REVISED LAYOUT PLAN  
SEPTEMBER 2023



Verdala  
INTERNATIONAL SCHOOL



# 2023 - 2024 Timeline

**JULY 2023**

Construction of kindergarten and Drama studio spaceshell form

**SEPT/OCT 2023**

Initial meetings with New contractors & Team  
Construction of concrete roof close Kindergarten (KG)

**JAN/FEB 2024**

Handover Admin building  
**STAGE 2/3** for FF&E fitout

**MAR/APR 2023**

2nd fix M&E Installation

**JUN - SEPT**

Interior finishes and furniture  
2nd/3rd fix

**OCT 2024**

Kindergarten transition - set up new space

**AUGUST 2023**

Tender process for construction finalised  
M&Es and Fitout team Agreed

**NOV/DEC 2023**

First Fix underway in KG  
**STAGE 1/2**  
Full POW for the life of the project.

**FEB 2023**

Revised design for the facade and landscaping to commence

**MAY 2024**

Joinery & fixed finishes  
Landscaping plan handover finalised

**SEPT 2024**

Snagging, testing prepare for

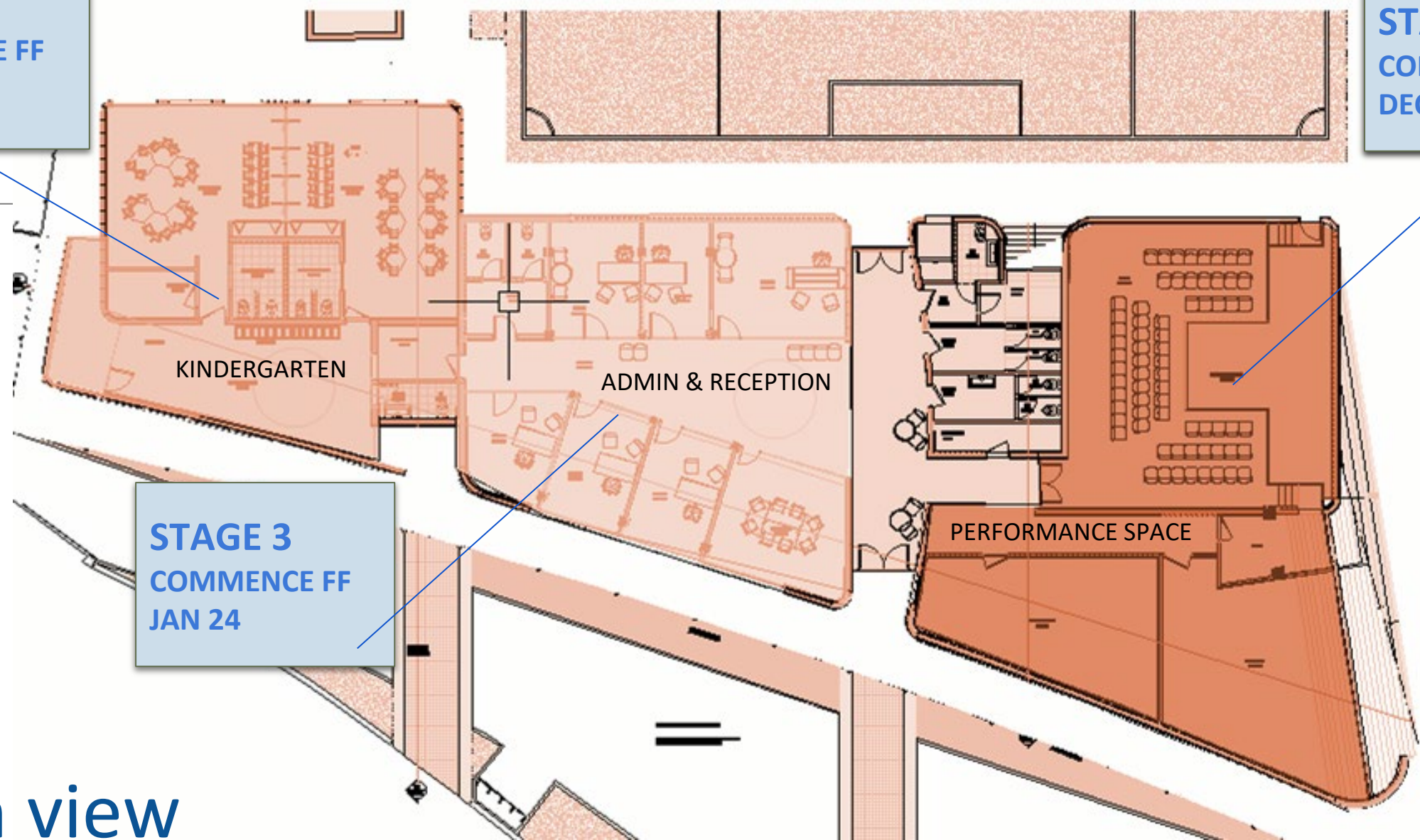
**JAN 2025  
OPEN !!!**



**Verdala**  
INTERNATIONAL SCHOOL

**STAGE 1**  
COMMENCE FF  
NOV 23

**STAGE 2**  
COMMENCE FF  
DEC 23



**STAGE 3**  
COMMENCE FF  
JAN 24

Plan view

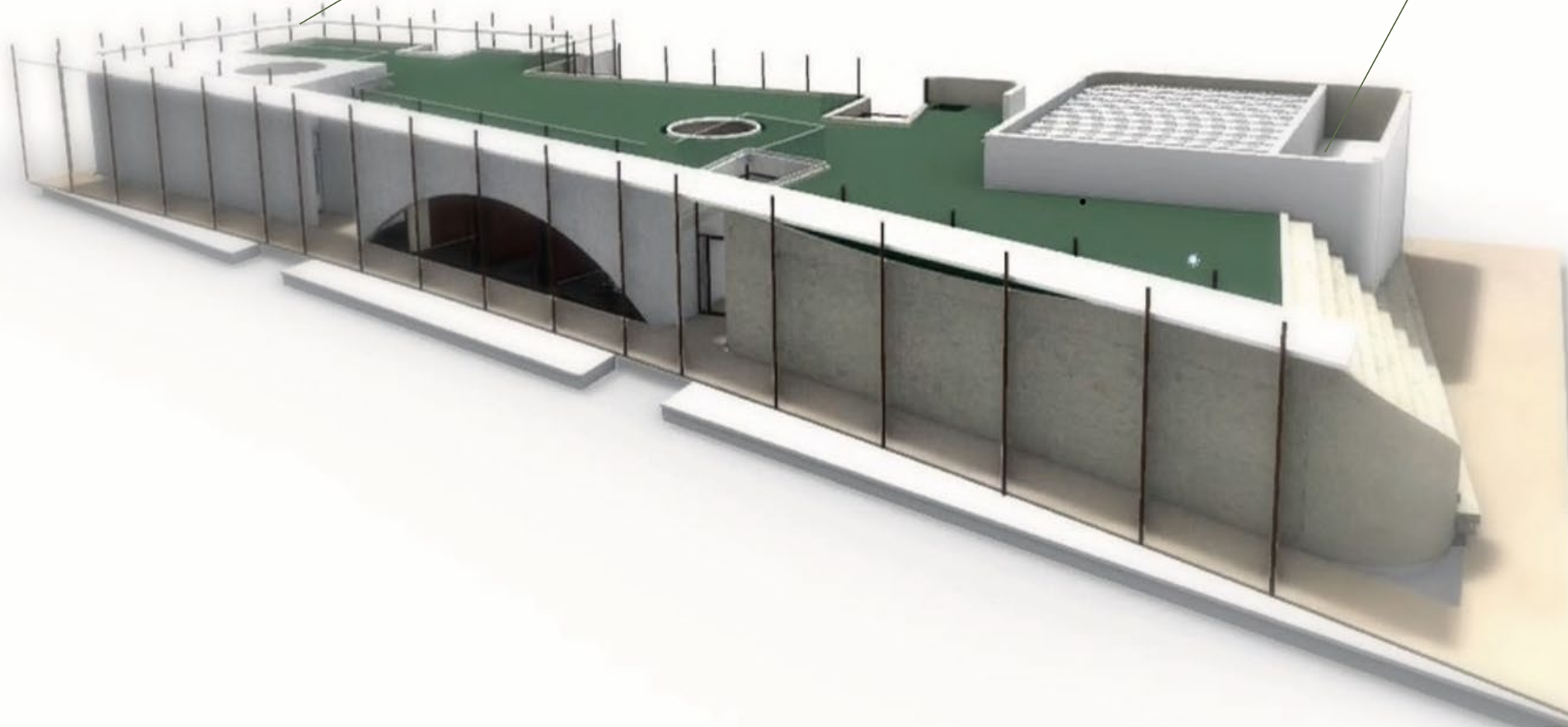
# ISSUES

---

- ENEMALTA** - Removal of cable poles completed sept 2023 after months of discussion and stalling
  - Substation delays
- REDESIGN** - Delays have occurred as both architects have had to amend designs. Related to the site parameters ,cost and availability of materials
- MELITA** - Cables located that has just been redirected 10 Oct 2023
- M&E plans** - Currently redesigning the M&Es layouts to suit chosen technology and update services we will be using throughout the New build

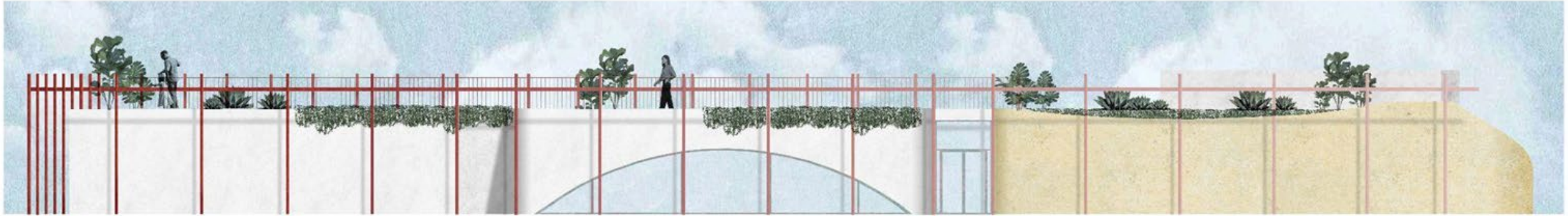
PV PANEL LAYOUT

SERVICES AREA REDESIGN



Phases	June 2019	June 2023	Update
Item	Projected Costs Ex VAT	Projected Costs Ex VAT	Status
<b>PHASE A: NEW JUNIOR SCHOOL BLOCK INCLUDING ADMINISTRATION</b> CONSTRUCTION INTERNAL FITOUT & FINISHES M&E THEATRE SPACE - INTERNAL  <i>All above include Planning Authority and Professional fees</i>	€600,000.00 €400,000.00 €250,000.00 €175,000.00	€360,179.25 €610,226.81 €352,283.98 €145,000.00	AGREED AUG 2022 AGREED SEPT 2023 AGREED SEPT 2023 ESTIMATED JUNE 2023
<b>PHASE B: EXTERIOR CAR PARK</b> <b>PHASE C: LANDSCAPING AND PAVILION</b> <b>PHASE D: SENIOR SCHOOL BREAK-OUT AREA</b> <b>PHASE E: GENERAL LANDSCAPING AND SPORT SEATING</b>  <b>PHASE F: NEW STEM BLOCK</b>  <i>All above include Planning Authority and Professional fees</i>	€135,000.00 €105,000.00 €145,000.00 €225,000.00  €580,000.00		TBF MERGED  MERGED  TBF
<b>TOTAL</b>	<b>€2,615,000.00</b>	<b>€1,467,690.04</b>	





FRONT ELEVATION 2022



REVISED ELEVATION MARCH 2023



BACK ELEVATION 2022



REVISED BACK ELEVATION MARCH 2023



Verdala  
INTERNATIONAL SCHOOL



KINDER GARDEN



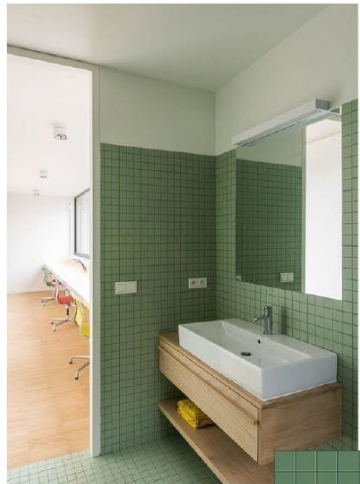
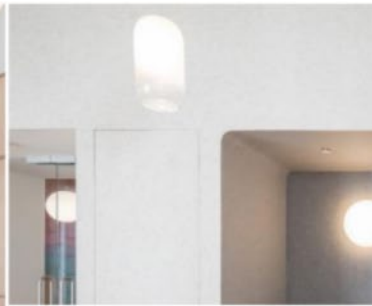
calming & gentle



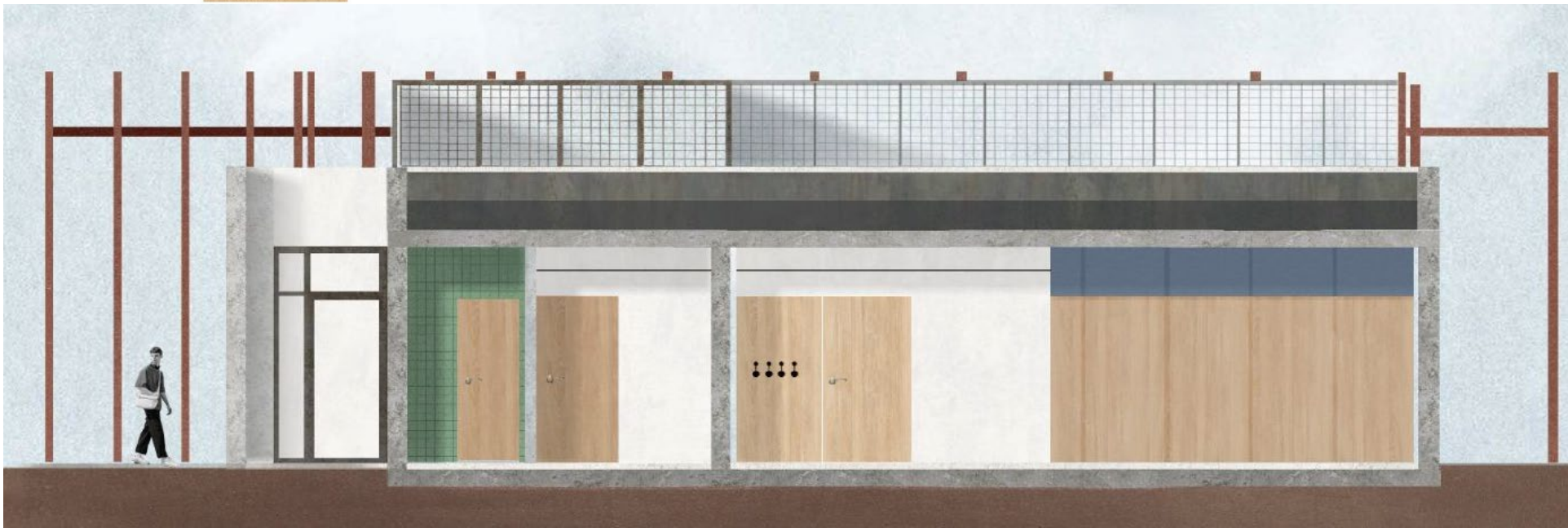
warm & comforting



grounding



bathrooms



Verdala  
INTERNATIONAL SCHOOL





grounding



creativity & concentration



alertness



positivity



concrete finish

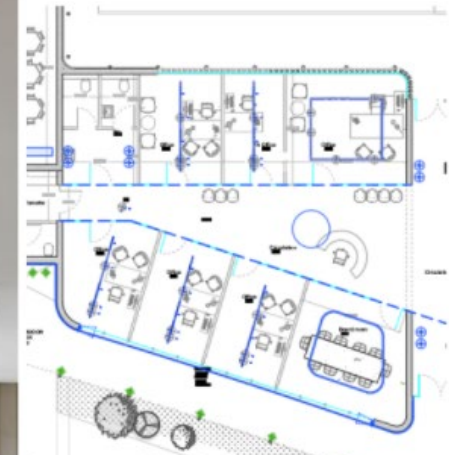


natural cherry

offices



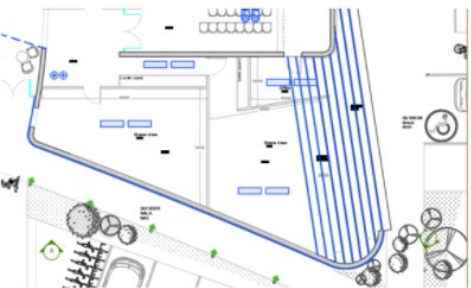
ADMINISTRATION  
& RECEPTION



Verdala  
INTERNATIONAL SCHOOL



drama class



grounding



creativity & concentration



warm & comforting



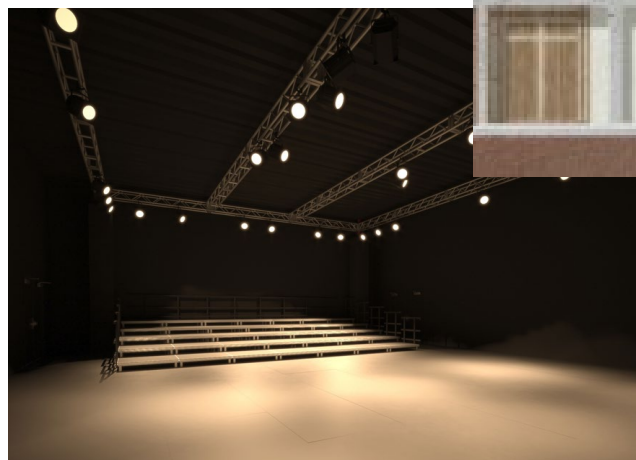
alertness



natural cherry



drapery fabric



PERFORMANCE SPACE & STUDIOS